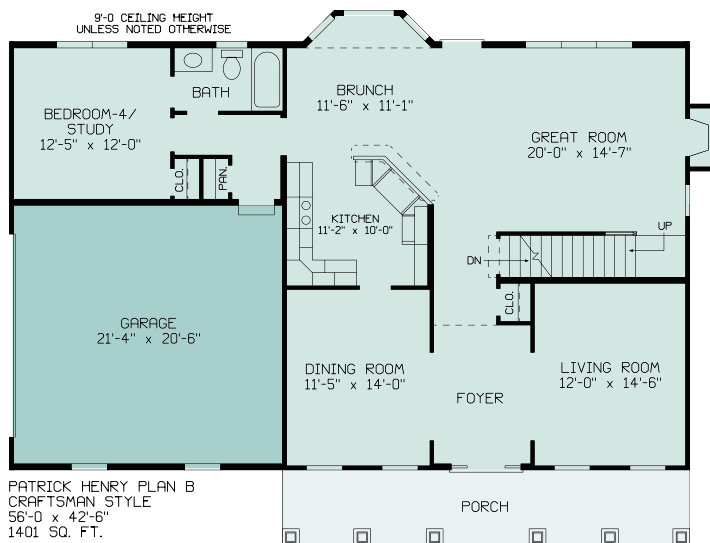


CRAFTSMAN STYLE PATRICK HENRY B



Patrick Henry B Craftsman, 2655 Sq. Ft. 1st floor 1401 Sq. Ft., 2nd floor 1254 Sq. Ft., Garage 462 Sq. Ft., Unfinished Basement 1042 Sq. Ft., 4-Bedrooms, 3-Bathrooms, ¾" Oak Hardwood Foyer, Master Bath, 5' Shower, 6' Soaking tub, with ceramic surround, double bowl vanity and walk-in closet, Trey Ceiling Master Bedroom, Two Story Foyer with railing overlooking 1st floor. Prairie grids in windows, front door and sidelites, porch posts ½ brick, ½ maintenance free materials. Perfection Shingles in gables with windows. 9' ceilings 1st floor.



Patrick Henry B 56' x 42'-6" 2655 Sq. Ft.

