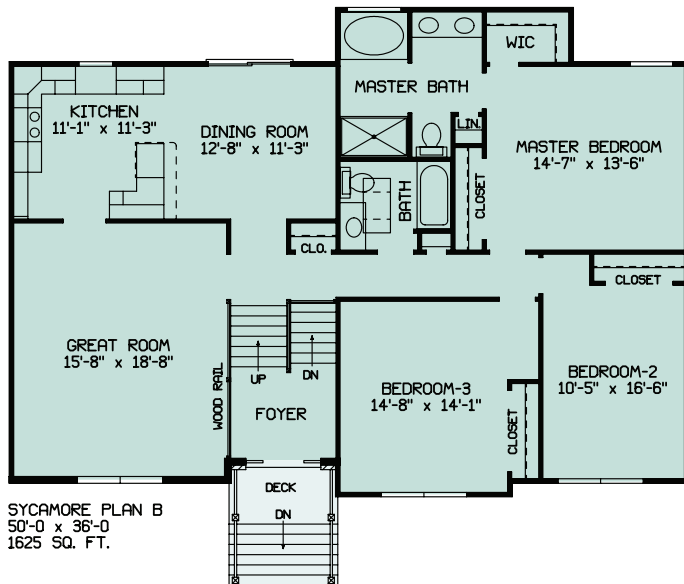


# SYCAMORE B

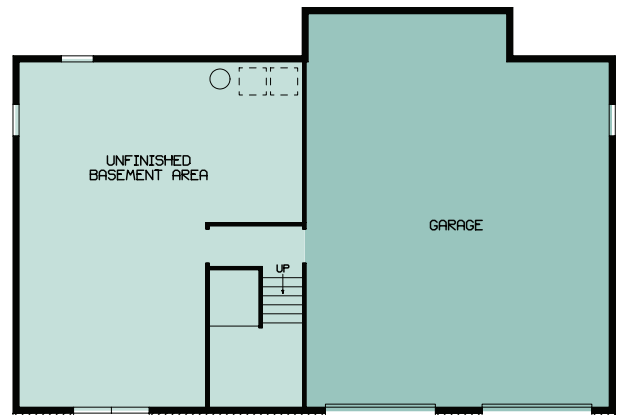


1,625 Total sq. ft. of living area, 730 sq. ft. additional unfinished lower level with one twin window and 3/0 walkout door and two car 30' x 25', 840 sq. ft. basement garage in lower level, 3 bedrooms, Two baths, Master bedroom with two closets, Luxury Master bath, 60" double bowl vanity with two sets of drawers, 5' shower with door and 5' soaking tub. 3/4" oak hardwood flooring in foyer and wood railing between foyer and Great room. Front entrance with 4' x 8' deck with steps to grade and maintenance free railing. Brick front lower level and around front door.



SYCAMORE PLAN B  
50'-0" x 36'-0"  
1625 SQ. FT.

**Sycamore B**  
**50' x 36'**  
**1625 Sq. Ft.**



SYCAMORE PLAN B  
50'-0" x 34'-0"

